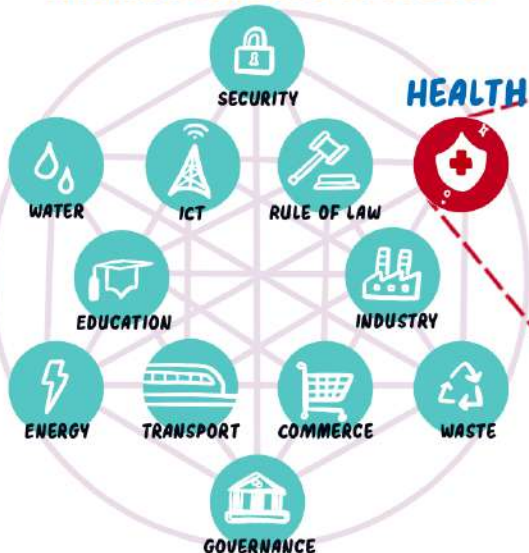


THE INFRASTRUCTURE PATHWAY TO RESILIENT HEALTH SERVICES

INTERDEPENDENCE OF INFRASTRUCTURE SYSTEMS



A SYSTEM OF SYSTEMS APPROACH TO PLANNING INFRASTRUCTURE WILL HELP HEALTHCARE FACILITIES:



AVOID SERVICE LOSS AND DISRUPTION



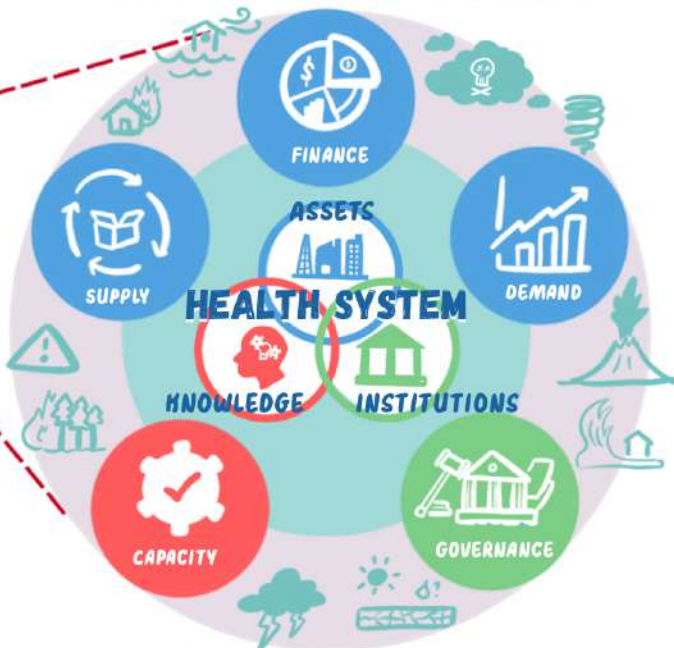
PLAN AND PRIORITIZE INVESTMENTS



MAXIMIZE SERVICE DELIVERY



A RESILIENT HEALTH SYSTEM NEEDS A STRONG ENABLING ENVIRONMENT



TOOLS TO USE



THE HOSPITAL SAFETY INDEX

- ASSESSING PREPAREDNESS AND RESILIENCE OF HEALTH FACILITIES

- HAZARD PREPAREDNESS: PLANNING FOR EMERGENCIES AND DISASTERS
- INFRASTRUCTURE RESILIENCE: PHYSICAL AND NON-PHYSICAL ELEMENTS CAN RECOVER FROM HAZARDS
- OPERATIONAL READINESS: TRAINED PERSONNEL AND SUFFICIENT MEDICAL SUPPLIES



THE ESCAP ASIA PACIFIC RISK AND RESILIENCE PORTAL

INCREASING CLIMATE RESILIENCE IN HEALTHCARE FACILITIES



STARTING POINT:

RAISING AWARENESS, POLITICAL COMMITMENT, AND COMMUNITY ENGAGEMENT

STEP



1

ASSEMBLE AND TRAIN A MULTI-SECTORAL OPERATIVE TEAM



2

ESTABLISH YOUR BASELINE



3

DEFINE SHORT AND LONG-TERM INTERVENTIONS



4

DEVELOP AND IMPLEMENT AN IMPROVEMENT PLAN



5

MONITOR AND EVALUATE IMPROVEMENTS



END GOAL:

SUSTAINABLE, CLIMATE-RESILIENT HEALTHCARE FACILITIES